



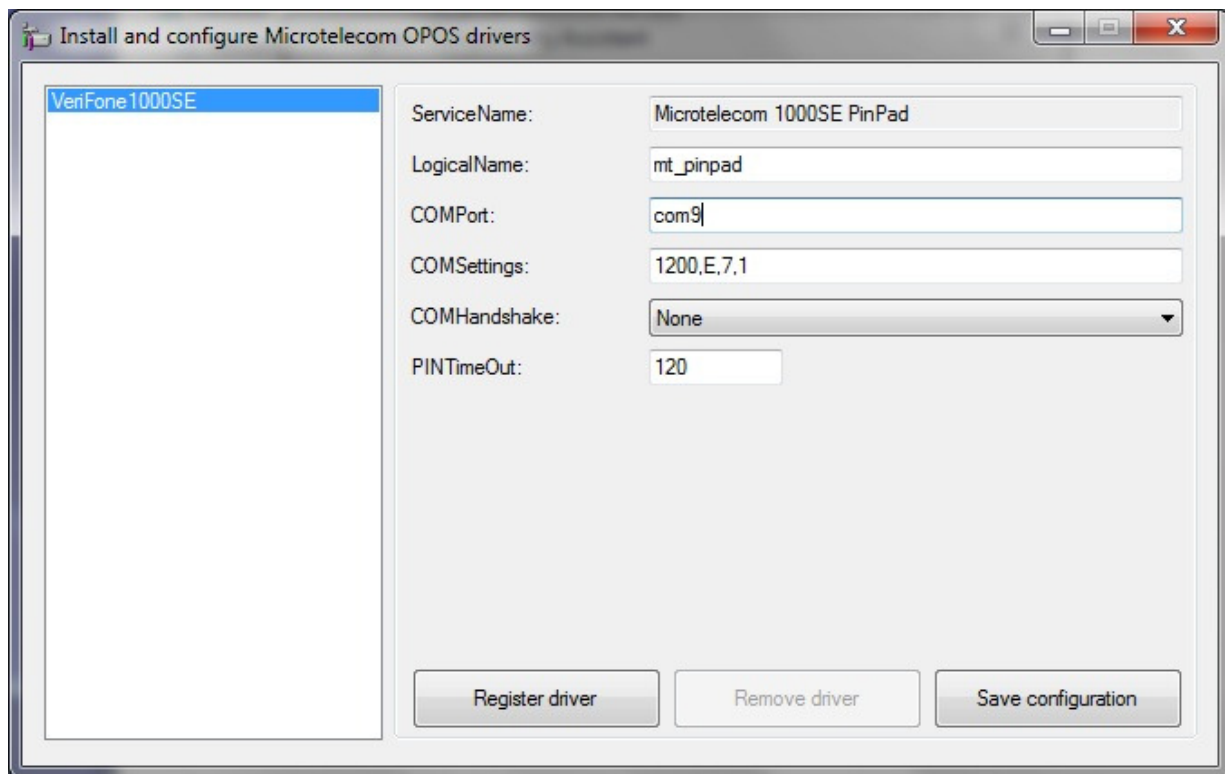
# MicroTelecom<sup>®</sup> Management Systems

## VeriFone 1000SE Pin Pad Installation Guide



1. Download Pin Pad Drivers From  
[http://www.microtelecompos.com/pos\\_printer\\_driver.htm](http://www.microtelecompos.com/pos_printer_driver.htm)
  - a. Save the Drivers to c:\mtcpos\drivers
2. Run c:\mtcpos\drivers\installer\setup.exe
3. Now Connect the VeriFone 1000SE USB Pin Pad to the Computer
4. Run c:\mtcpos\drivers\OPOSDriver\MT\_OPOS\_Setup.exe

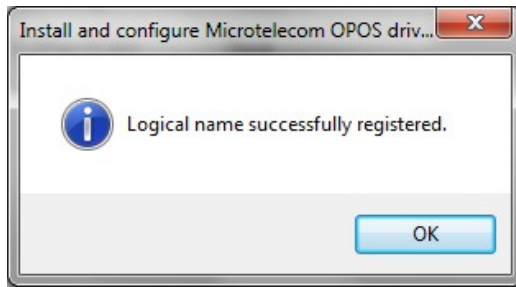
### *MicroTelecom OPOS Driver*



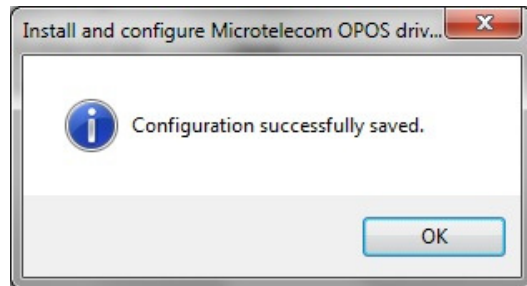
- a. Set the logical name to “mt\_pinpad” (lower case)
- b. Set the pin pad com port. If you are not sure what com port is used, check in device manager (see screenshot in next page). Enter com port in lower case.
- c. Click Register Now.

# MicroTelecom<sup>®</sup> Management Systems

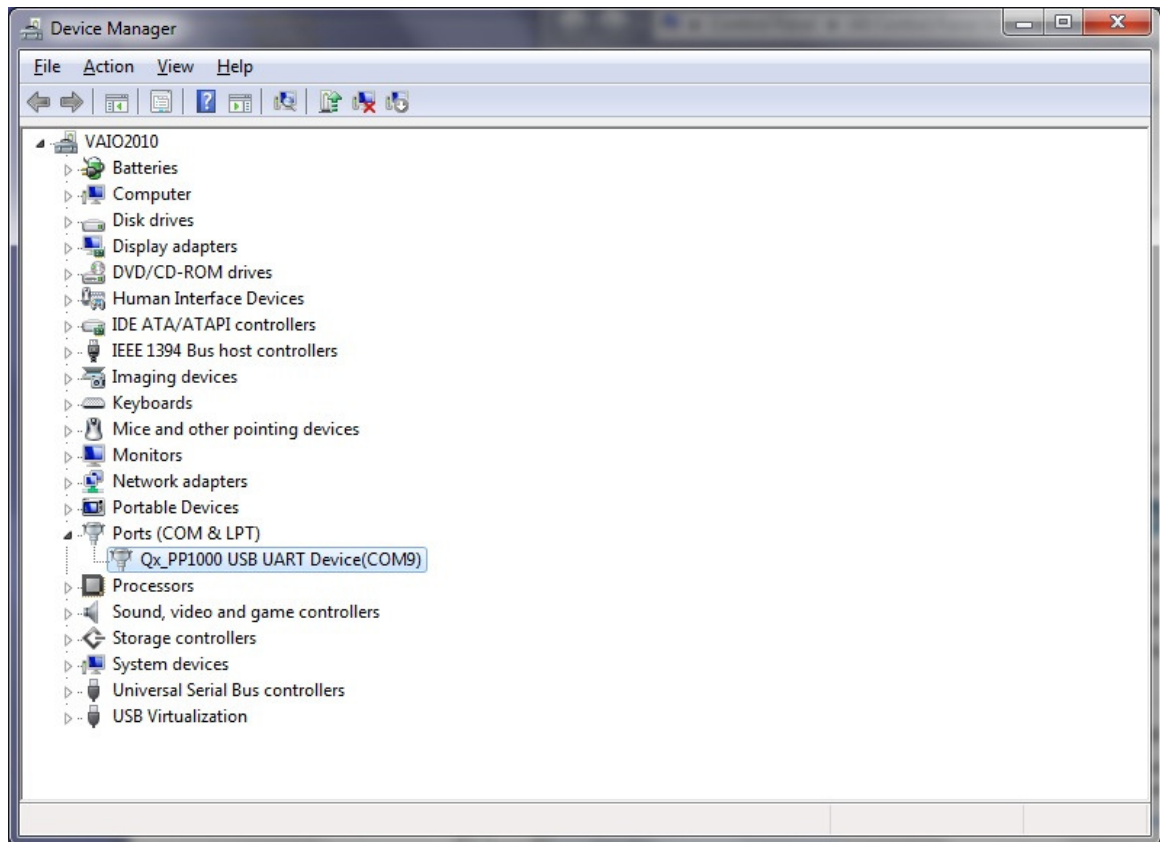
## VeriFone Debit Card Pin Pad 1000SE Installation



d. Click "Save Configuration"



### *Verify Com Port in Device Manager*



# MicroTelecom<sup>®</sup> Management Systems

## VeriFone Debit Card Pin Pad 1000SE Installation



5. Login To MicroTelecom
  - a. Open the Option Screen Under the Settings Tab
  - b. Select Peripherals Settings
  - c. Set the Pin Pad Com Port, and click “Save Current Location”

